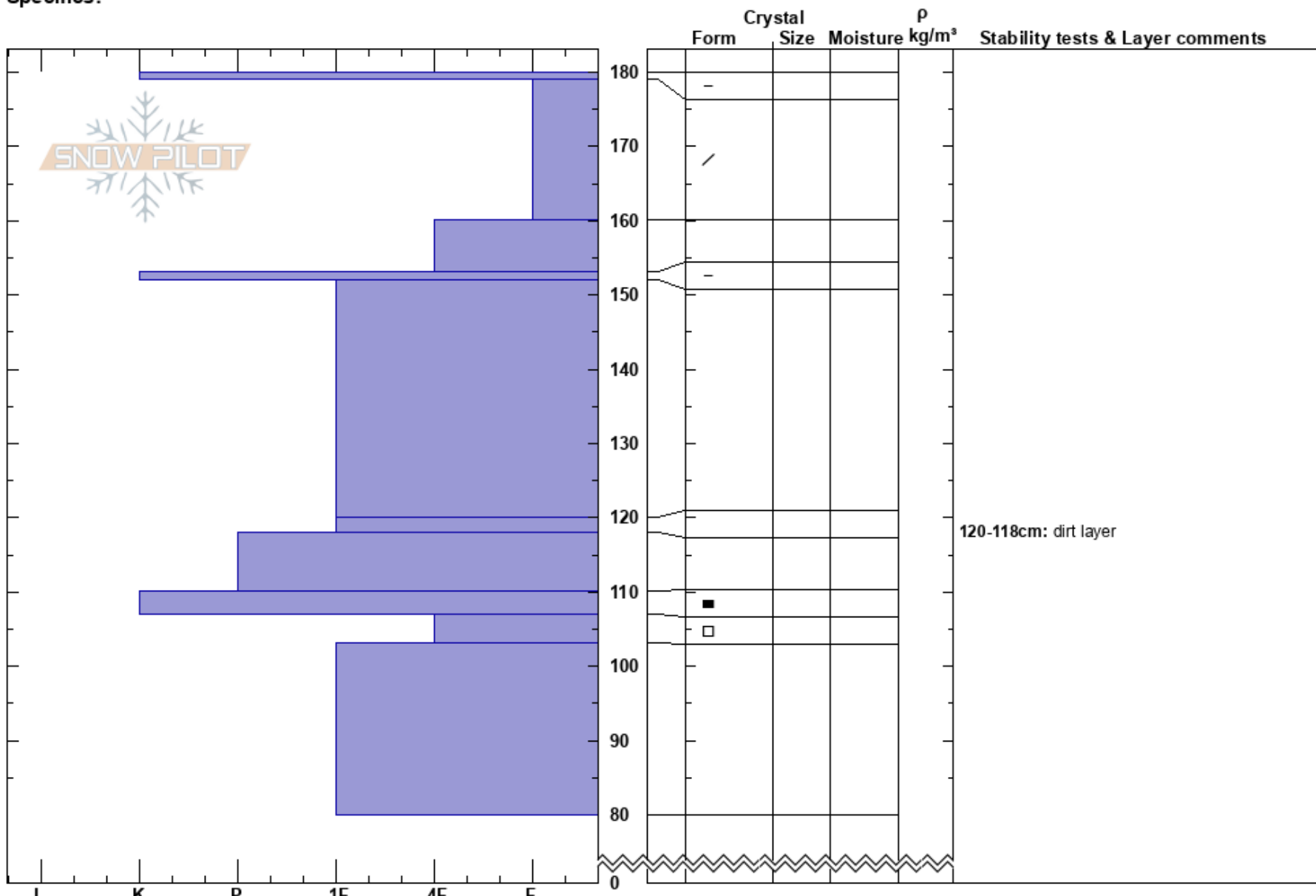


Red Pine Lake
 Central Wasatch
 UT
 Elevation: 9630 ft
 Aspect: 255°
 Specifics:

Evelyn Lees
 03/08/2018 - 11:45am
 Co-ord: 40.54518N, -111.69304W
 Slope Angle: 30°
 Wind Loading: previous

Stability:
 Air Temperature:
 Sky Cover: FEW
 Precipitation: NO
 Wind: Calm

HS:180
 Layer Notes:
 120-118cm: dirt layer
 107-103cm: Problematic layer



Notes: High very thin clouds.