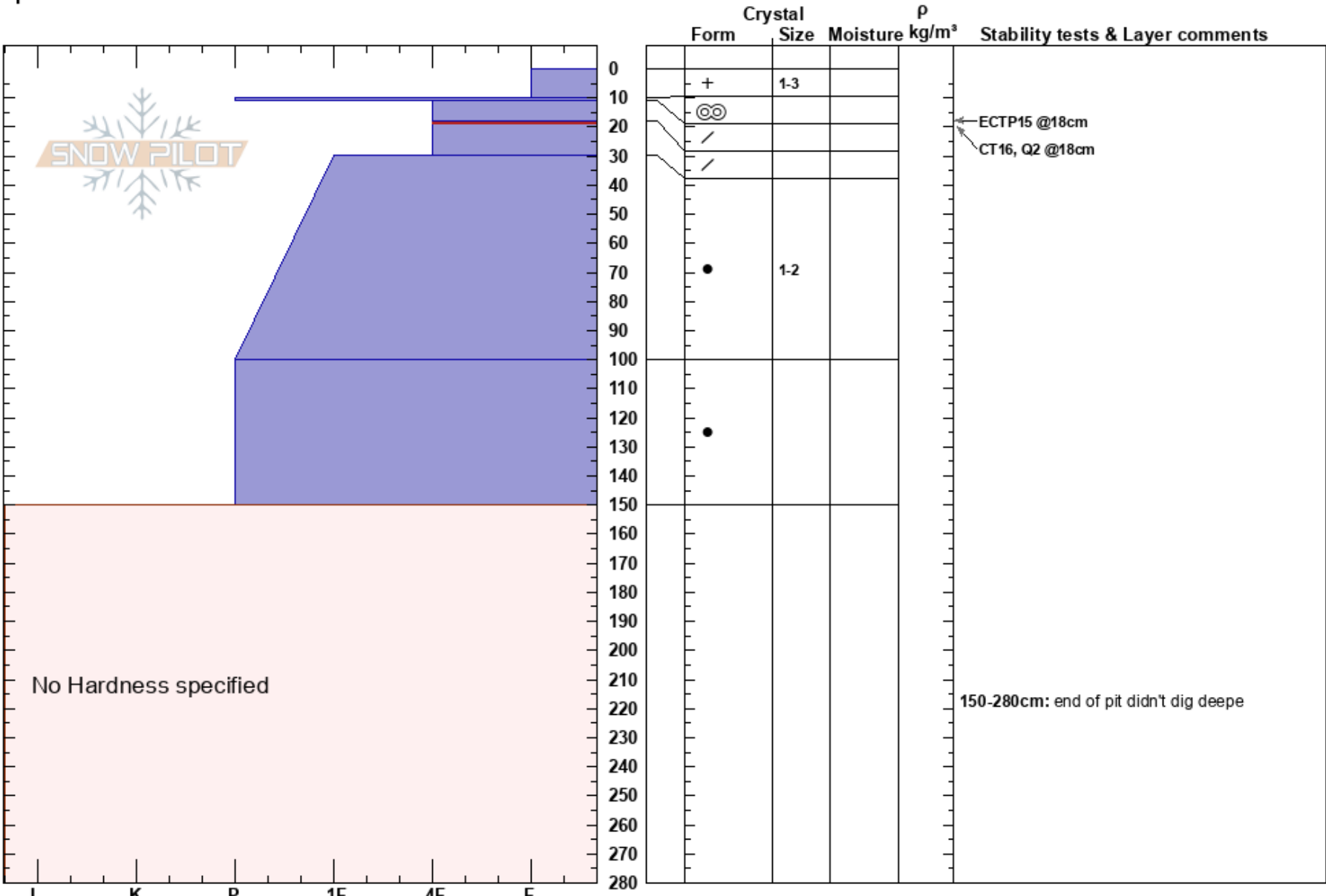


Pineapple Basin
 Snoqualmie Pass
 WA
 Elevation: 1400 m
 Aspect: NE
 Specifics:

Andrew Krause
 02/18/2024 - 1:45pm
 Co-ord: 10T 616453E 5256213N
 Slope Angle: 16°
 Wind Loading: no

Stability:
 Air Temperature: -2°C
 Sky Cover: OVC
 Precipitation: S-1
 Wind: Calm

HS:280
 PF:30
 PS: 5
 Layer Notes:
 18-30cm: Problematic layer
 150-280cm: end of pit didn't dig deepe



Notes: