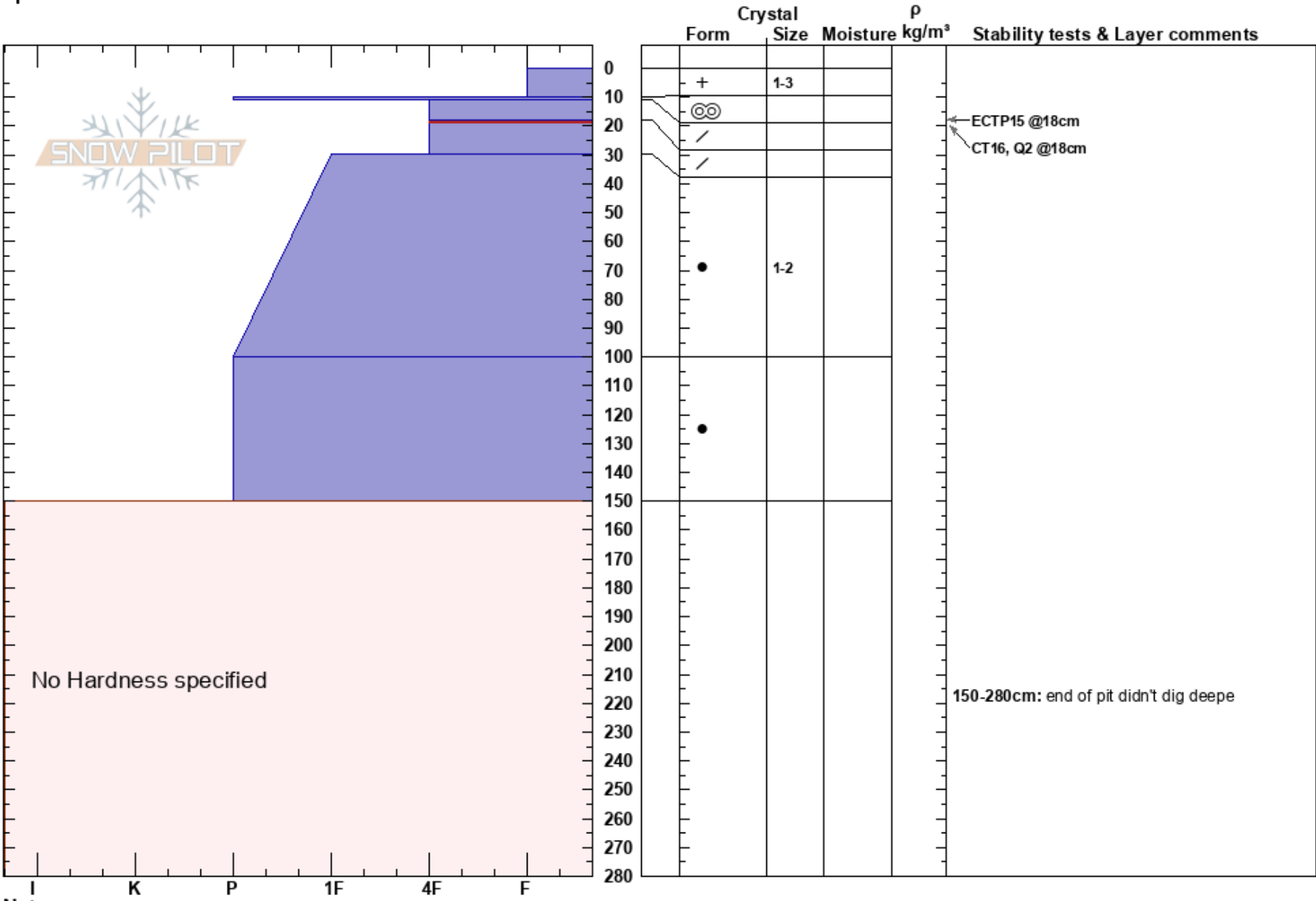


Pineapple Basin
 Snoqualmie Pass
 WA
Elevation: 1400 m
Aspect: NE
Specifics:

Andrew Krause
 02/18/2024 - 1:45pm
Co-ord: 10T 616453E 5256213N
Slope Angle: 16°
Wind Loading: no

Stability:
Air Temperature: -2°C
Sky Cover: OVC
Precipitation: S-1
Wind: Calm

HS:280
PF:30
PS: 5
Layer Notes:
 18-30cm: Problematic layer
 150-280cm: end of pit didn't dig deepe



Notes: