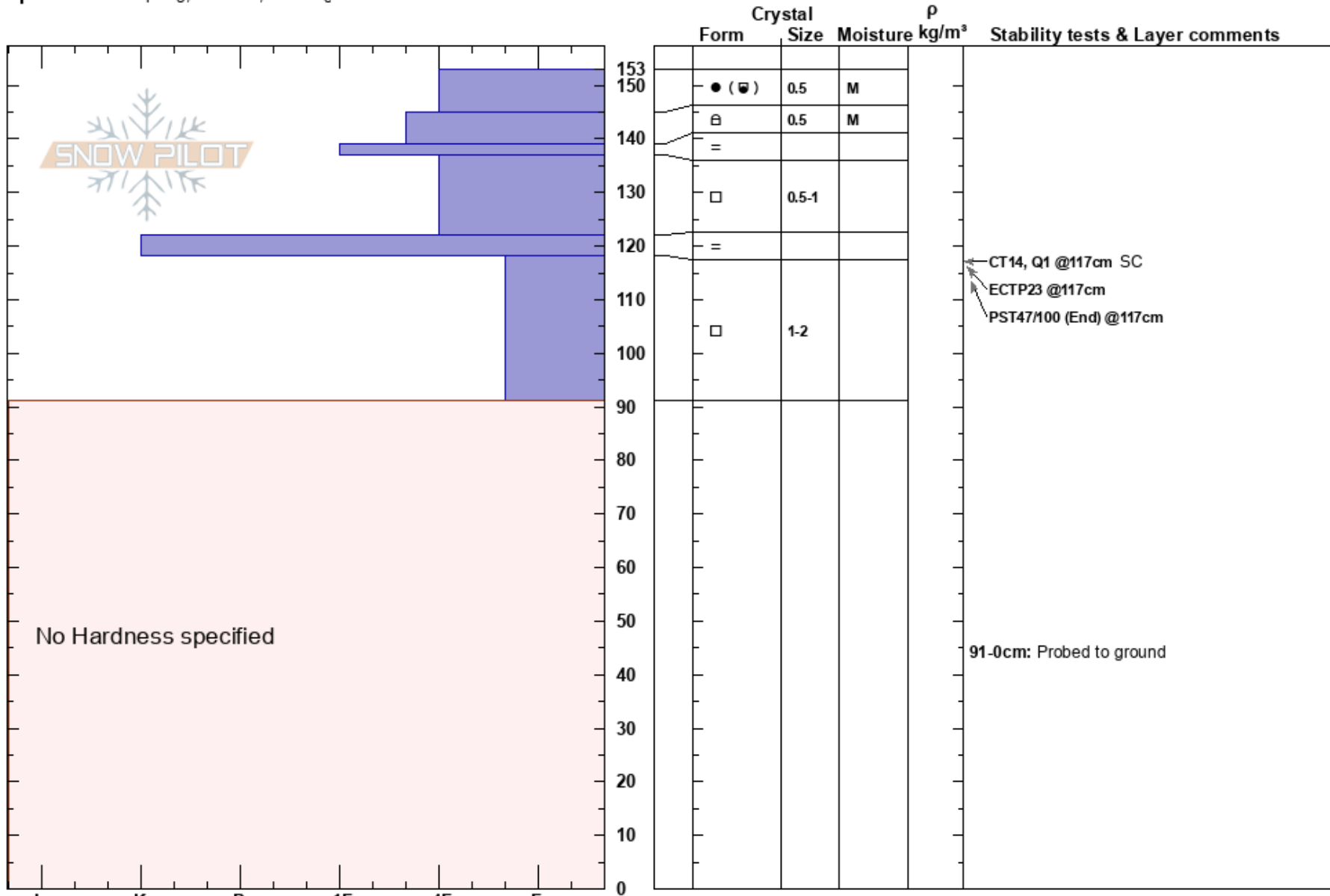


Woods Lake
 Central Sierra
 CA
Elevation: 8720 ft
Aspect: 2°
Specifics: Collapsing, localized; Cracking

Steve Reynaud
 12/29/2017 - 12:30pm
Co-ord: 38.68149N, -120.01926W
Slope Angle: 20°
Wind Loading: no

Stability: Fair Stable **HS:** 153
Air Temperature:
Sky Cover: SCT
Precipitation: NO
Wind: Calm

Layer Notes:
 118-91cm: Problematic layer
 91-0cm: Probed to ground



Notes: Test pit dug in near treeline terrain to monitor faceting in upper snowpack. Whumpung and collapsing observed at 3 different locations. Unstable areas were isolated throughout the terrain, no intentional avalanches could be triggered on test slopes with the facet layer/slab combo.