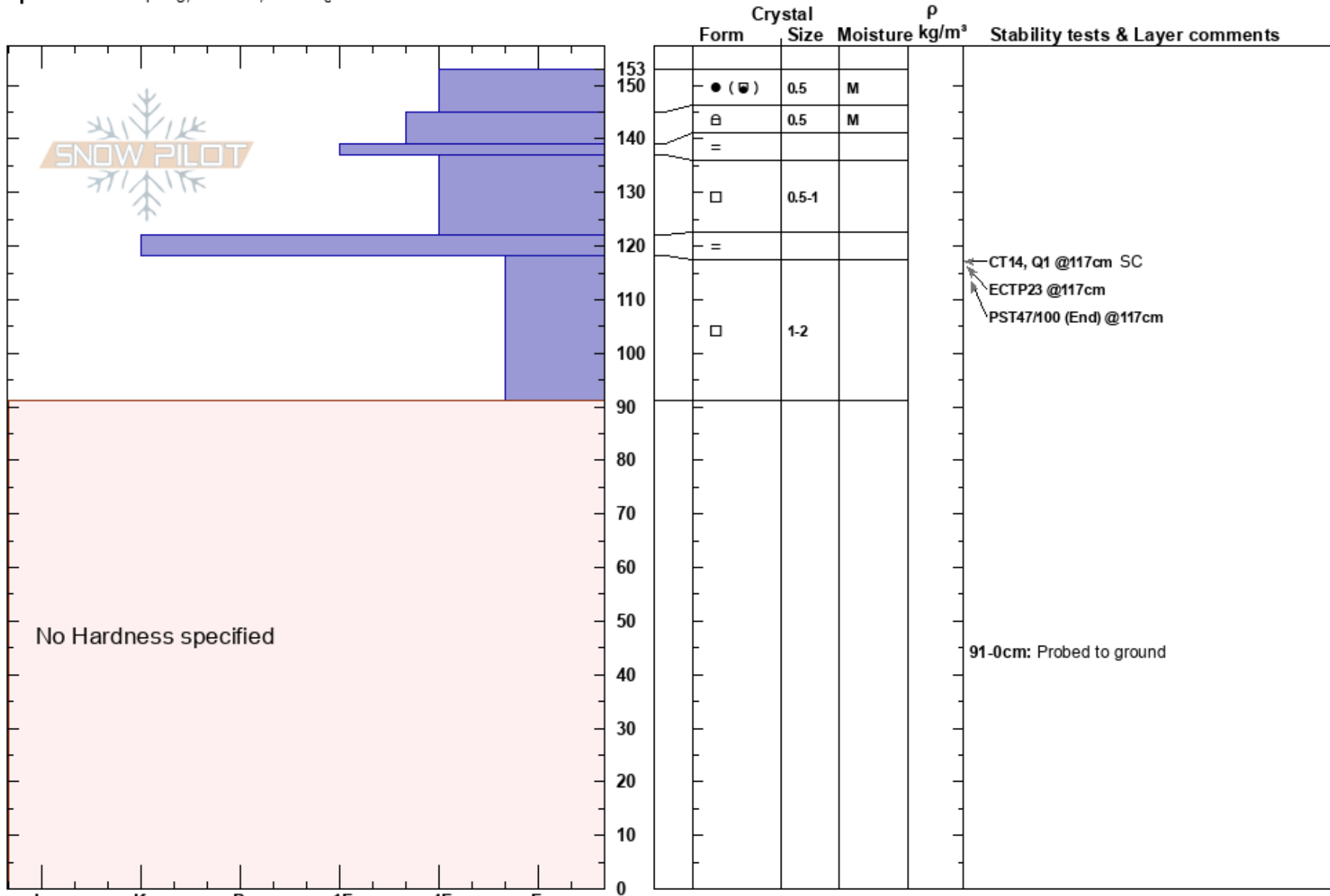


Woods Lake  
 Central Sierra  
 CA  
**Elevation:** 8720 ft  
**Aspect:** 2°  
**Specifics:** Collapsing, localized; Cracking

Steve Reynaud  
 12/29/2017 - 12:30pm  
**Co-ord:** 38.68149N, -120.01926W  
**Slope Angle:** 20°  
**Wind Loading:** no

**Stability:** Fair Stable **HS:** 153  
**Air Temperature:**  
**Sky Cover:** SCT  
**Precipitation:** NO  
**Wind:** Calm

**Layer Notes:**  
 118-91cm: Problematic layer  
 91-0cm: Probed to ground



**Notes:** Test pit dug in near treeline terrain to monitor faceting in upper snowpack. Whumpfung and collapsing observed at 3 different locations. Unstable areas were isolated throughout the terrain, no intentional avalanches could be triggered on test slopes with the facet layer/slab combo.