

Layer Notes:

170-166cm: Problematic layer

166-165cm: 220727

145-144cm: 220720

Wind: N Strong

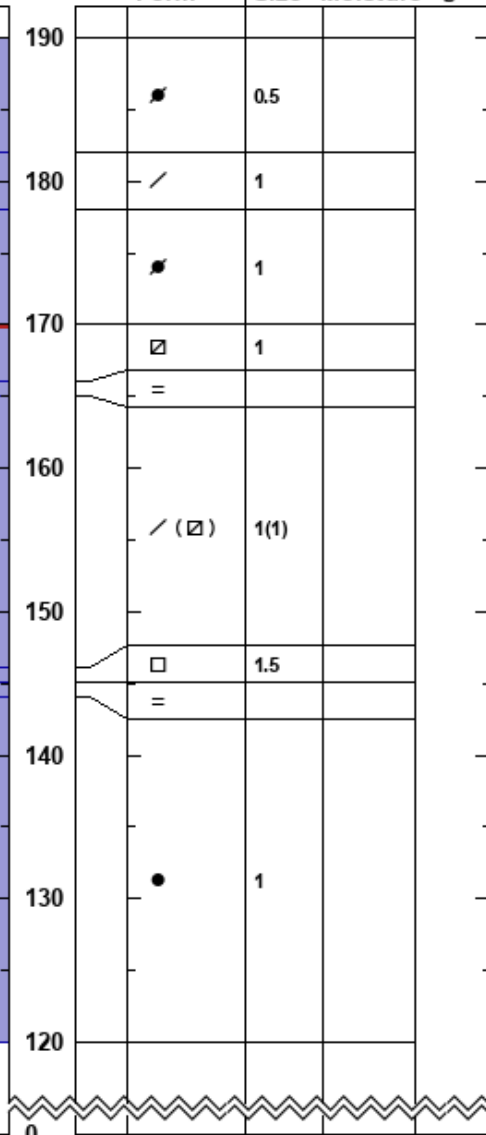
t avalanche activity on

Crystal

ρ

kg/m³

Stability tests & Layer comments



← ECTP11 @169cm

- 166-165cm: 220727

*—ECTP22 @146cm

145-144cm: 220720

These are the weak layers responsible for recent Sp in bounds.

Overall Lee NW Swd above these layers is sporadic with different SZ holding different loads.